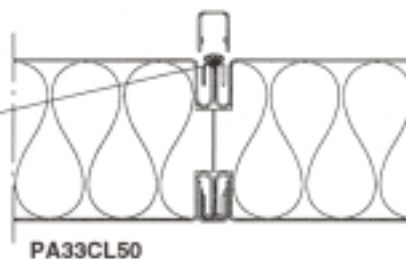
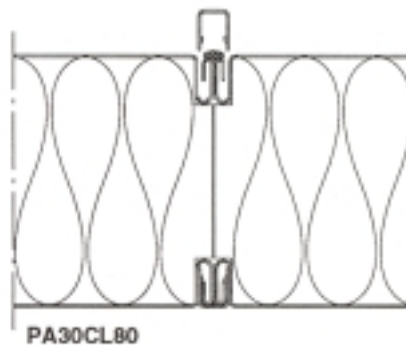
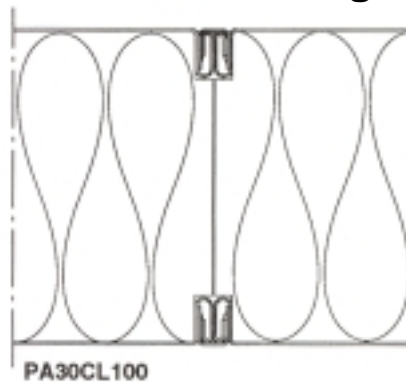
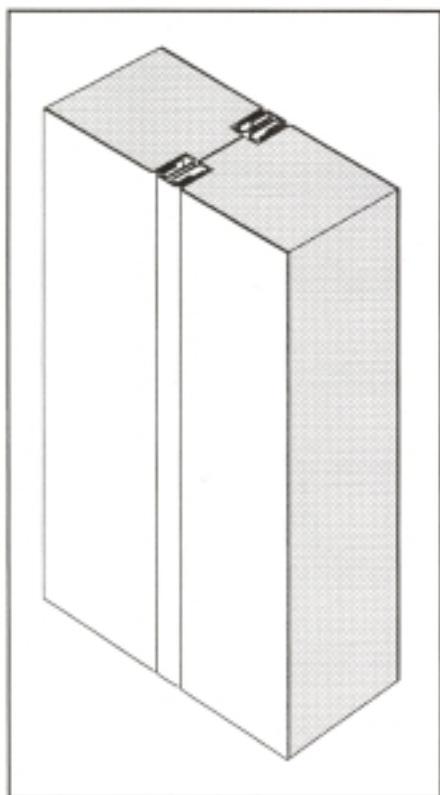




Aabo Akustik

FAN ROOM

**AABO AKUSTIK
WALL SYSTEM**

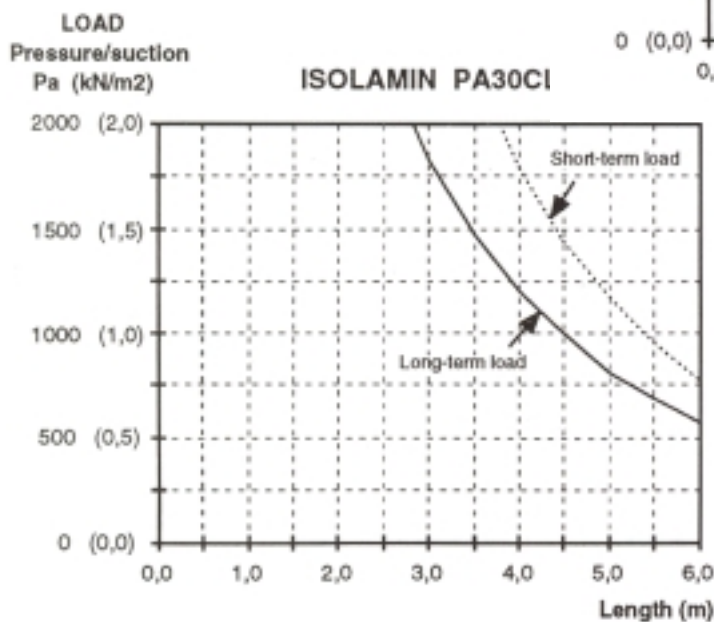
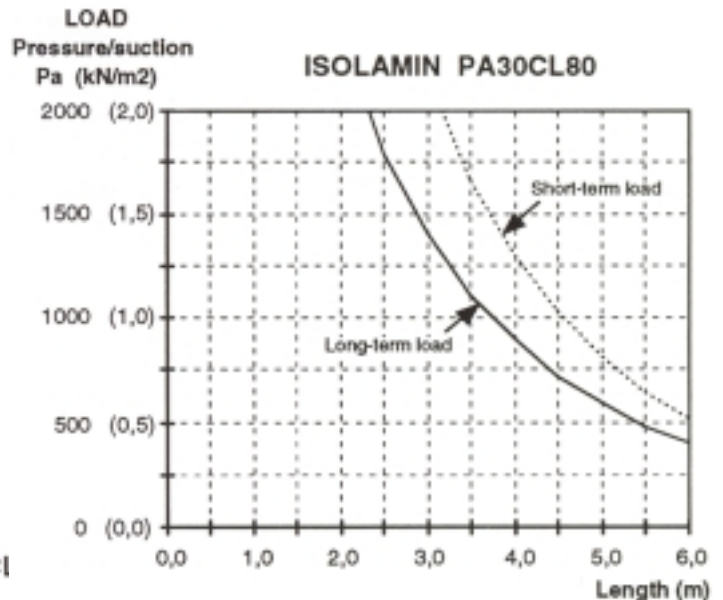
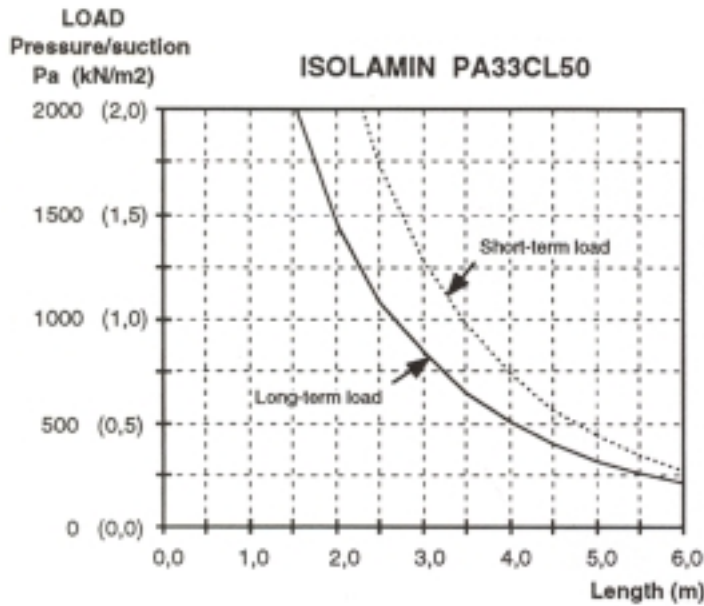
Fan room wall, fire resistant and sound reducing.


The technical information given in this publication was accurate in time for the publication. We will reserve us for changes which depends on our forth going product development. Latest available technical information regarding products will be given on request.

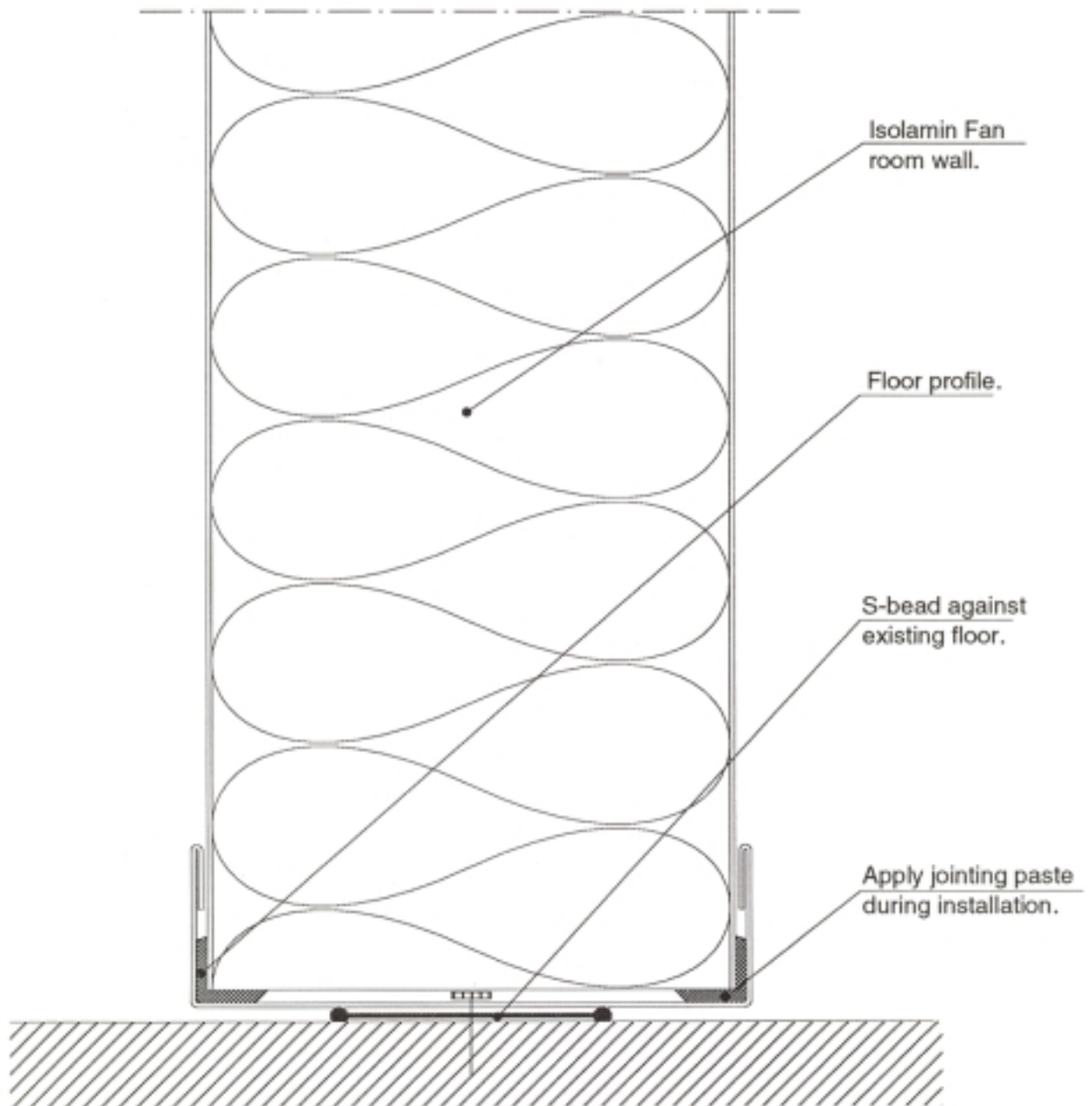
PANEL	PA30CL80	PA30CL100	PA33CL50
Thickness :	80 mm	100 mm	50 mm
Weight :	24,2 kg/sq.m	27,6 kg/sq.m	20,4 kg/sq.m
Surface finish/	Painted / 565, 1180 mm	Painted / 565, 1180 mm	Painted / 565, 1180 mm
Modular width :	PVC, Galv. / 590, 1180 mm	PVC, Galv. / 590, 1180 mm	PVC, Galv. / 590, 1180 mm
Fire class :	A 60 *	A 60 *	A 30 *
Sound reduction :	33 dB la lab	32 dB la lab	34 dB la lab
Coefficient of thermal			
Conductance :	0,54 W/sq.m C	0,44 W/sq.m C	0,81 W/sq.m C

* Type approval certificate Nr: 4427/88

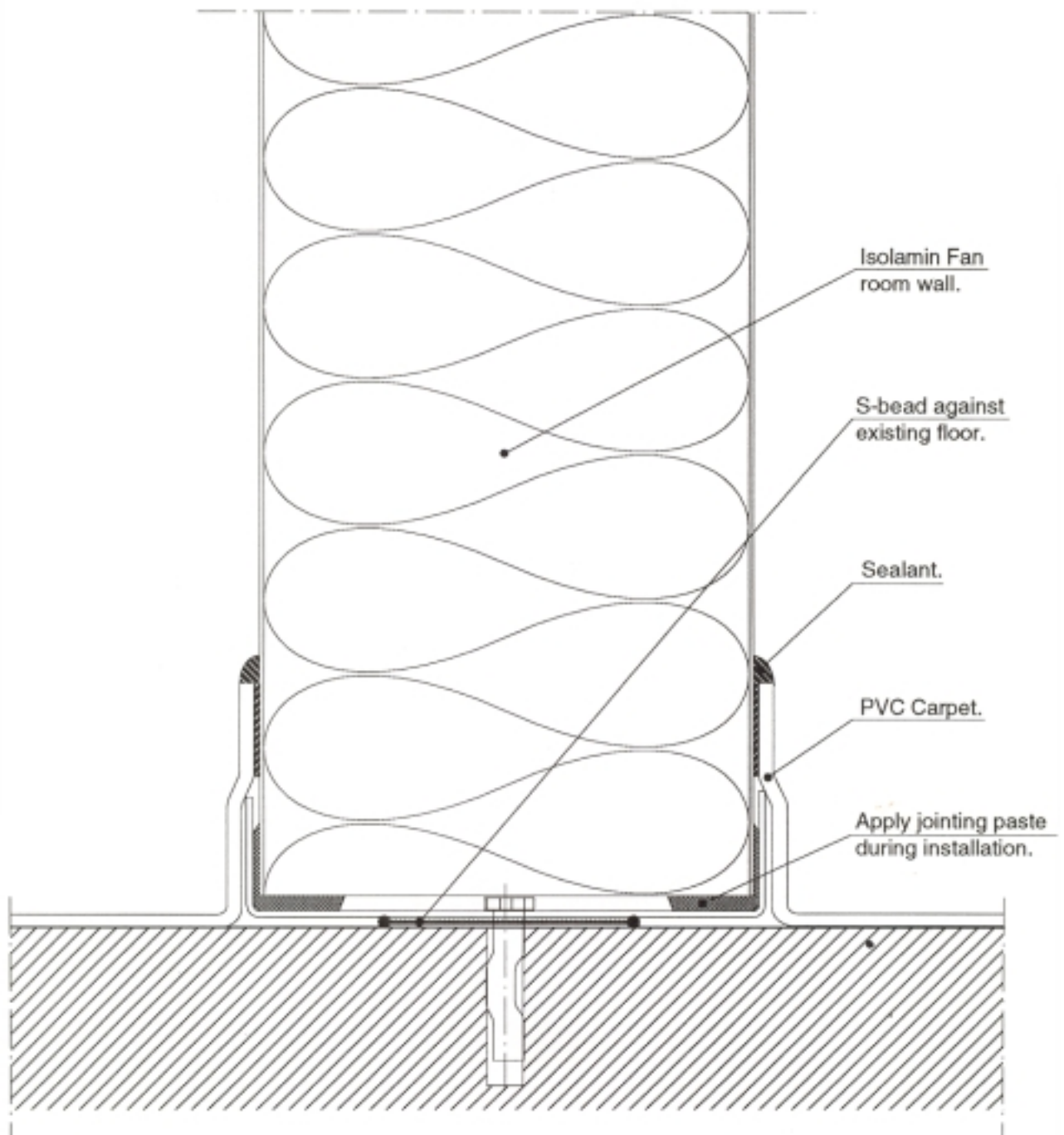
TOLERANCES	CORE MATERIAL	SURFACE MATERIAL
Length : ± 5 mm	Material : Mineral wool	Material : Hot dipped galvanised steel sheet
Width : ± 1 mm	Density : 170 kg/cu.m ± 10 %	Surface finish/: PVC, Galv. / 0,5 mm
Thickness : +0/-1 mm		Thickness : Painted / 0.6 mm
		All types / 0.7 mm – PA33CL50

Pressure/suction load of fan room wall.


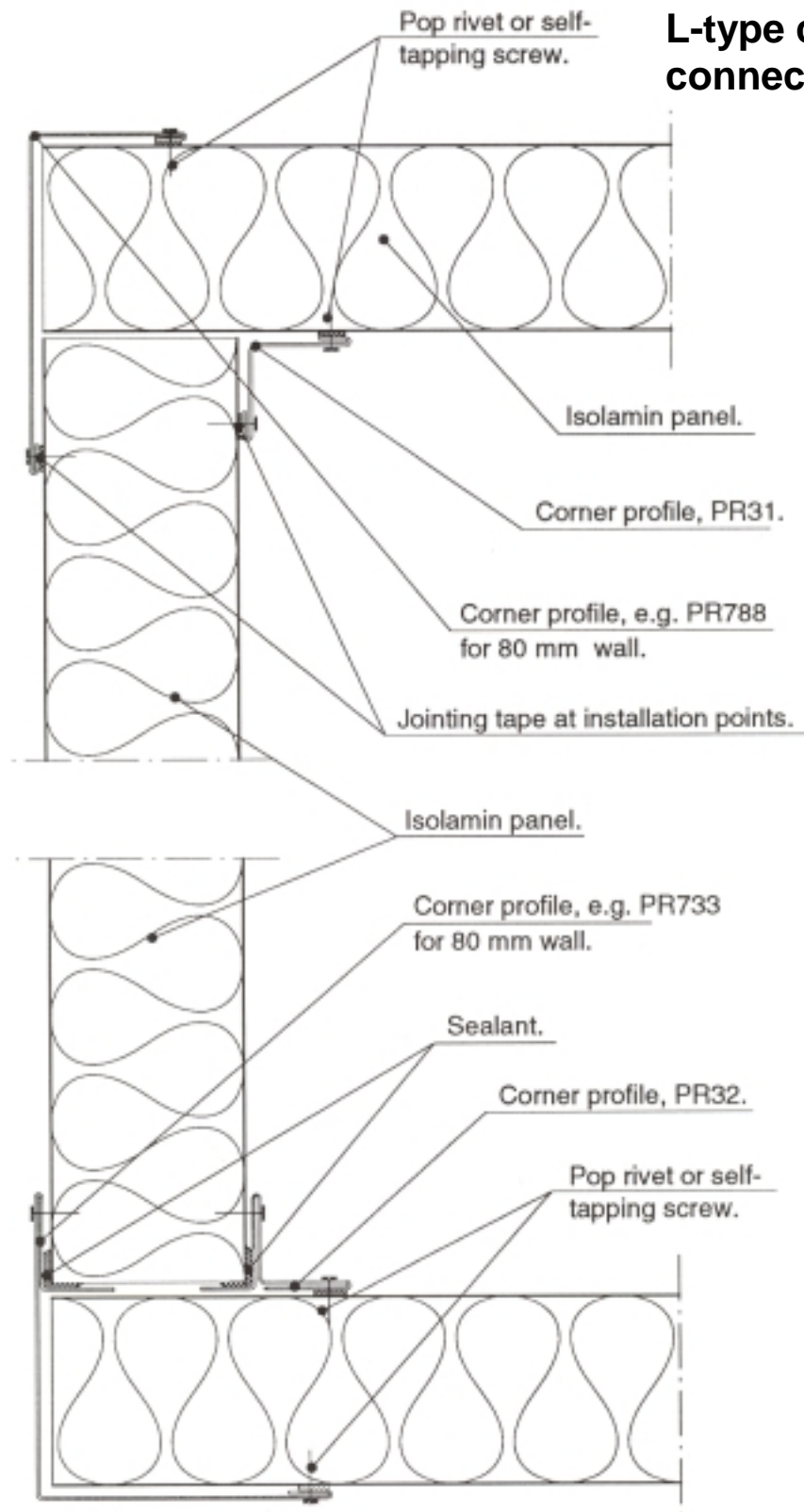
Floor connection, alternative 1.

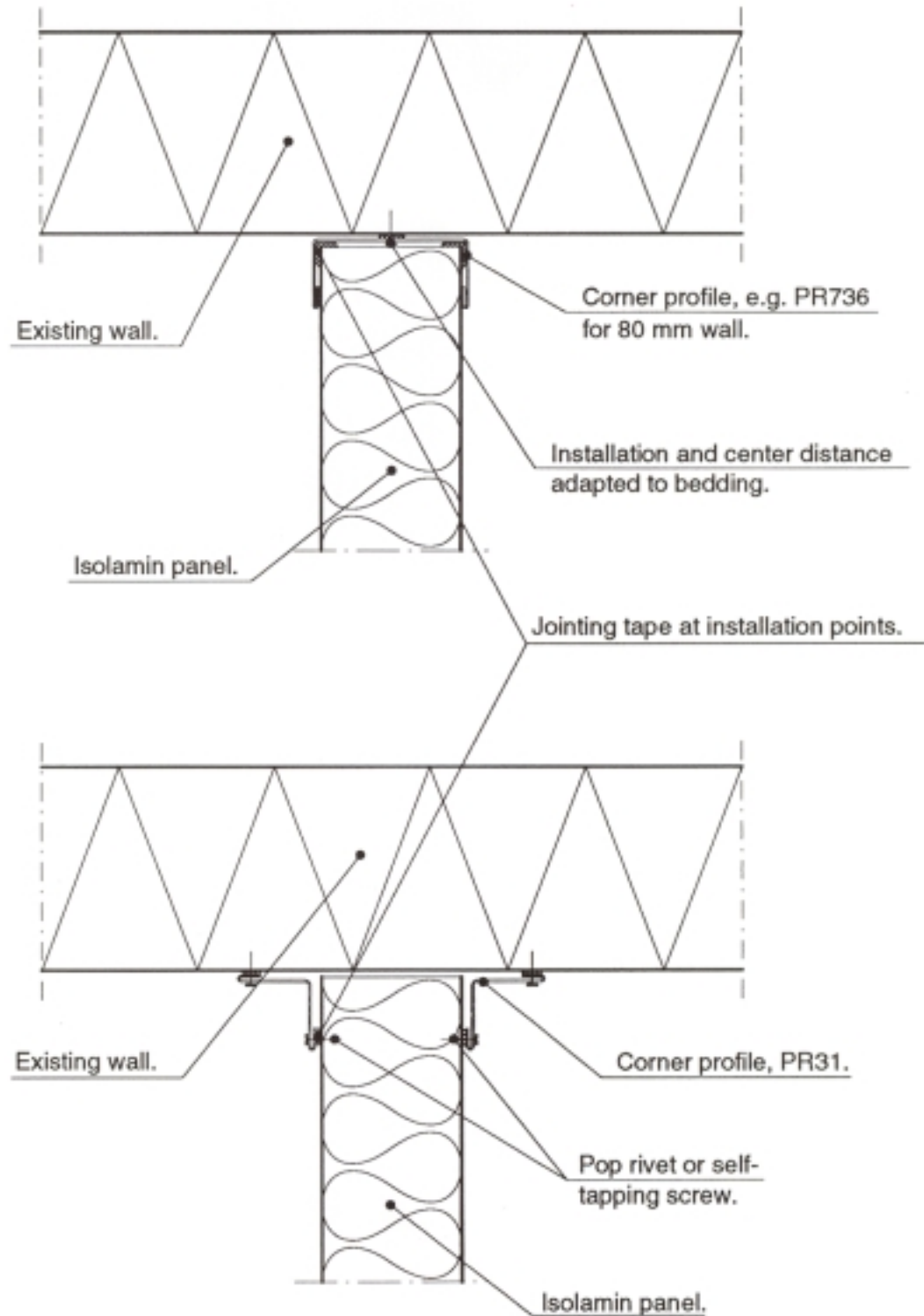


**Floor connection,
alternative 2.**



L-type corner connection.



T-type corner connection.

Wall-Ceiling connection, including various ceiling levels.

